

Spanish Property South Africa



Costa Blanca & Costa Calida Properties

email: info@spanishproperty.co.za

web: www.spanishproperty.co.za

V-78517

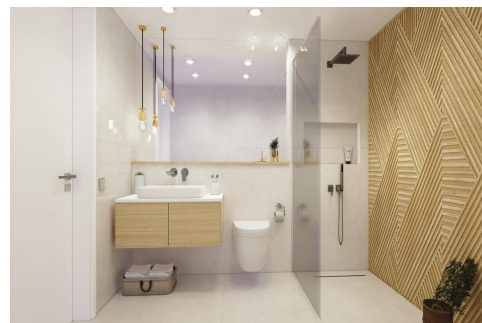
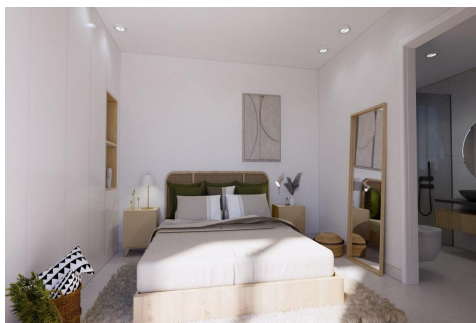
Apartment in Pilar de la Horadada

235,900 €

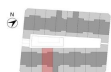


Year Built:	--
Build Size:	72m²
Plot Size:	24m²
Bedrooms:	2
Bathrooms:	2
Pool:	No
Air conditioning:	--
Central heating:	--
Parking:	--
Terrace:	--
Location:	Pilar de la Horadada
Property Type:	Apartment

NEW BUILD RESIDENTIAL OF BUNGALOW APARTMENTS IN PILAR DE LA HORADADA New Build exclusive residential of 20 modern bungalow apartments in Pilar de la Horadada. You can choose 2 or 3 bedrooms bungalow apartments with 2 bathrooms. The ground floor units have large front and rear terraces and direct access to the communal pool and garden. The top floor properties have a very large rooftop solarium. The living space consists of a large open plan living / dining room and fully equipped kitchen with large sliding doors incorporating the outside space. The bedrooms have plenty of space, a built-in wardrobe and the main one has a large bathroom with a walk-in shower. The bathrooms are fully furnished and equipped with shower screens, cabinets and mirrors with pleasant low-level LED and mirror lighting and underfloor heating. All homes have a private parking space. Pilar de la Horadada is a typical Spanish village in the most southern part of the Costa Blanca. The large main street has supermarkets, lots of shops, restaurants and bars and some lovely squares. The beautiful beaches of Torre de la Horadada and Mil Palmeras with fine sand promenade is just 5 minutes away. The airports of Corvera (Murcia) and Alicante are respectively 40 and 55 minutes away



PLANTA BAJA



VIVIENDA A BAJA Y COMPLEMENTOS	
Superficie de Construcción	72,00 m²
Superficie de Construcción	72,00 m²
Superficie de Construcción	72,00 m²
Superficie de Construcción	72,00 m²

ISO A3 - ESCALA 1:75



PLANTA BAJA



VIVIENDA A BAJA Y COMPLEMENTOS	
Superficie de Construcción	72,00 m²
Superficie de Construcción	72,00 m²
Superficie de Construcción	72,00 m²
Superficie de Construcción	72,00 m²

ISO A3 - ESCALA 1:75